

Design: Mark Nagy-Mihaly

Year: 2018



ELEMENTS

AST-30

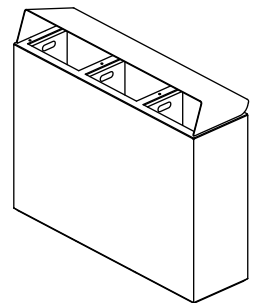
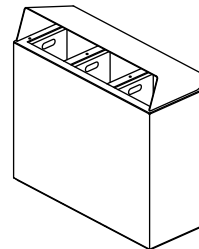
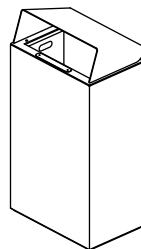
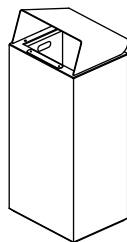
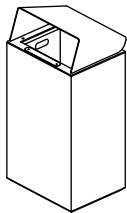
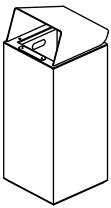
AST-45

AST-60

AST-90

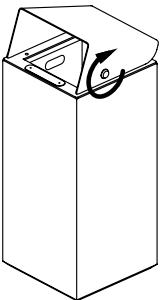
AST-E30

AST-E60

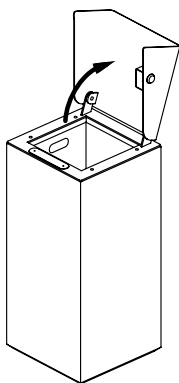


FUNCTION

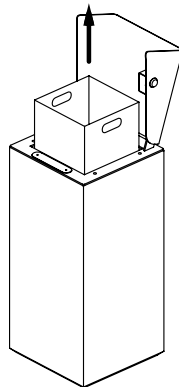
8mm
triangle key



1.



2.



3.

Design: Mark Nagy-Mihaly

Year: 2018

INFO

Material:	high performance concrete (HPC)
Standard colour:	white
Finish:	natural cast
Treatment:	impregnated
Metal:	powder coated galvanized steel/ stainless steel
Standard metal colour:	anthracite gray – RAL 7016
Lifting:	with lifting straps
Placement:	on load-bearing, ready-to-use walking surface
Fixing:	by anchoring
Cleaning:	with neutral detergent



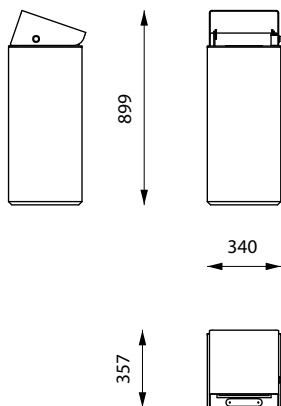
MEASUREMENTS

0  500 mm

AST-30

30 l

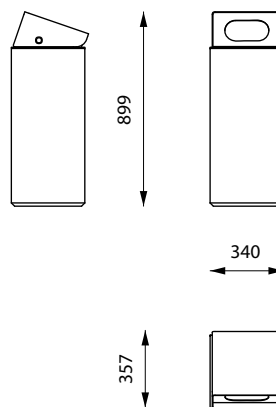
125 kg



AST-30-K/ with closed lid

30 l

125 kg



INSTALLATION

The product may be lifted with lifting straps. The product is fixed with anchor bolt to load-bearing walking surface. Behind the product, 150 mm lid-opening space is needed. For further information see Installation Guide.

MAINTENANCE

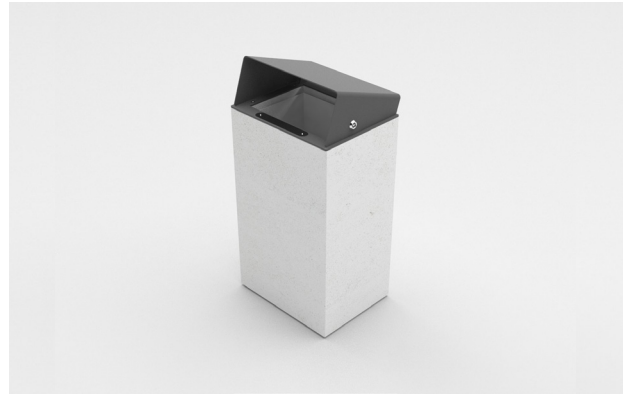
The product may be cleaned with neutral detergent. For further information see Maintenance Guide.

Design: Mark Nagy-Mihaly

Year: 2018

INFO

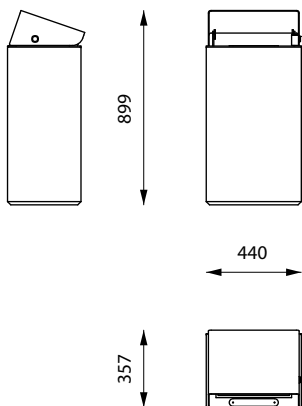
Material:	high performance concrete (HPC)
Standard colour:	white
Finish:	natural cast
Treatment:	impregnated
Metal:	powder coated galvanized steel/ stainless steel
Standard metal colour:	anthracite gray – RAL 7016
Lifting:	with lifting straps
Placement:	on load-bearing, ready-to-use walking surface
Fixing:	by anchoring
Cleaning:	with neutral detergent



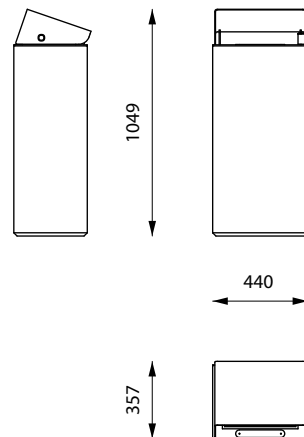
MEASUREMENTS

0 500 mm

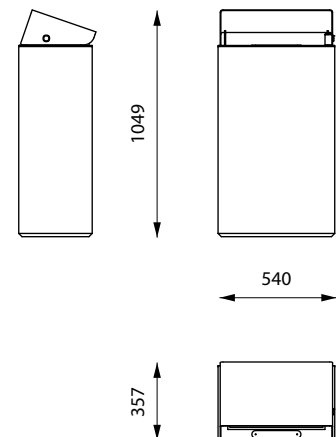
AST-45
45 l
150 kg



AST-60
60 l
180 kg



AST-90
90 l
210 kg



INSTALLATION

The product may be lifted with lifting straps. The product is fixed with anchor bolt to load-bearing walking surface. Behind the product, 150 mm lid-opening space is needed. For further information see Installation Guide.

MAINTENANCE

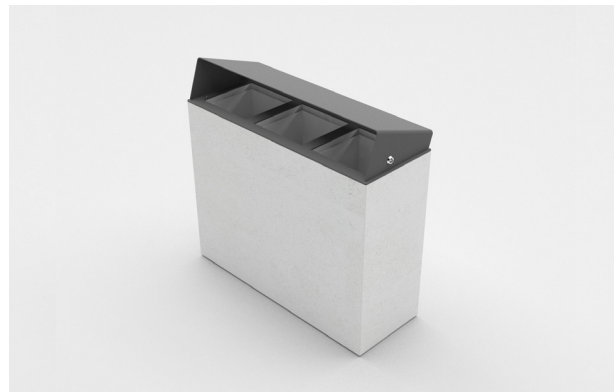
The product may be cleaned with neutral detergent. For further information see Maintenance Guide.

Design: Mark Nagy-Mihaly

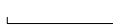
Year: 2018

INFO

Material:	high performance concrete (HPC)
Standard colour:	white
Finish:	natural cast
Treatment:	impregnated
Metal:	powder coated galvanized steel/ stainless steel
Standard metal colour:	anthracite gray – RAL 7016
Lifting:	with lifting straps
Placement:	on load-bearing, ready-to-use walking surface
Fixing:	by anchoring
Cleaning:	with neutral detergent



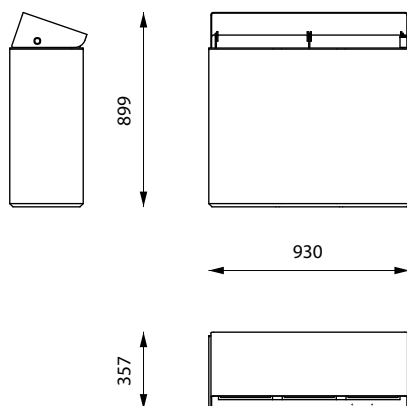
MEASUREMENTS

0  500 mm

AST-E30

3x30 l

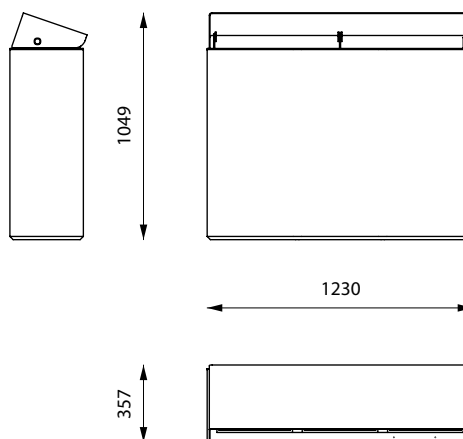
315 kg



AST-E60

3x60 l

500 kg



INSTALLATION

The product may be lifted with lifting straps. The product is fixed with anchor bolt to load-bearing walking surface. Behind the product, 150 mm lid-opening space is needed. For further information see Installation Guide.

MAINTENANCE

The product may be cleaned with neutral detergent. For further information see Maintenance Guide.